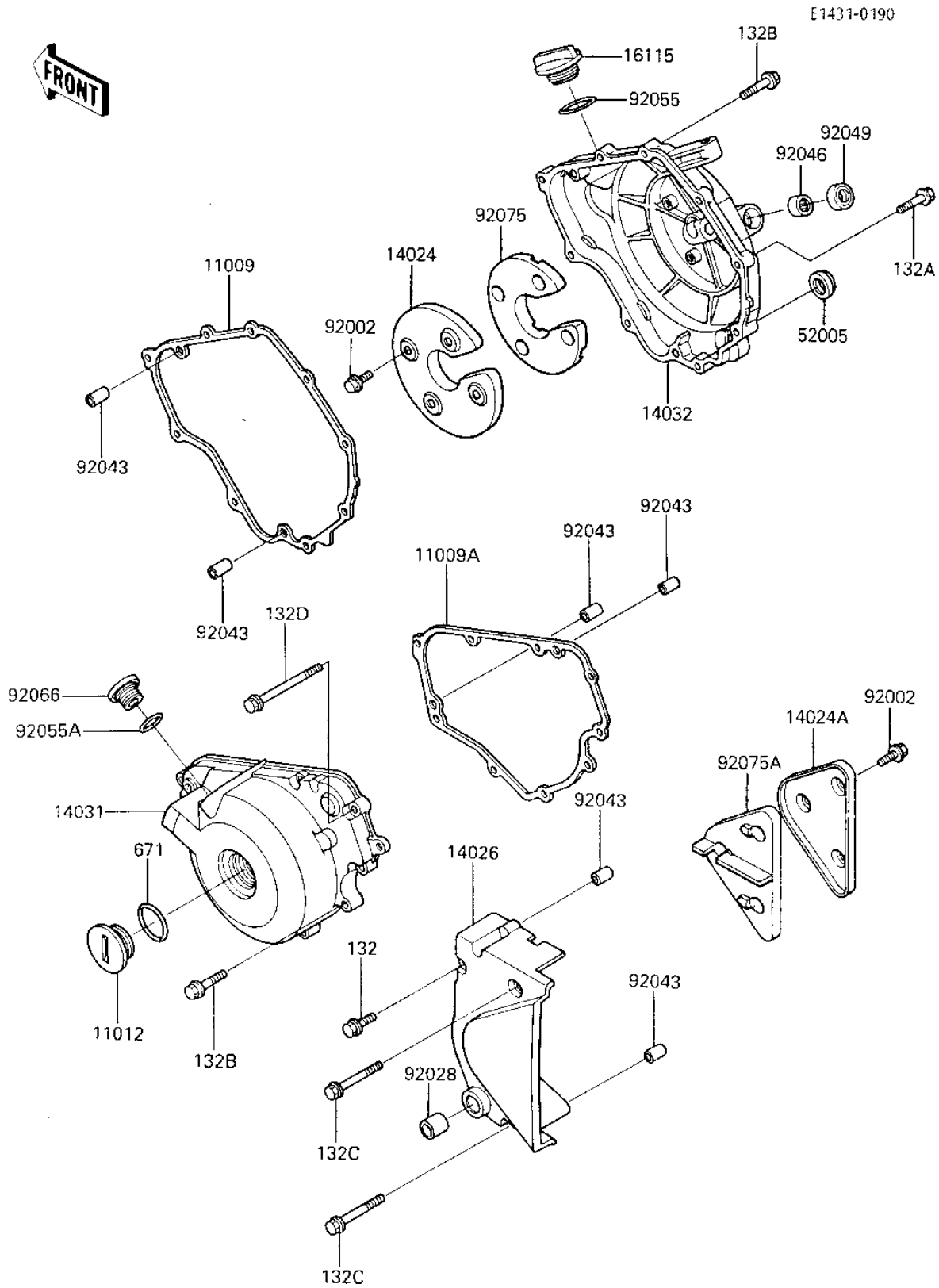


1986 NINJA® 250R PARTS DIAGRAM

ENGINE COVERS



1986 NINJA® 250R PARTS LIST

ENGINE COVERS

| ITEM NAME | PART NUMBER | QUANTITY |
|-------------------------------------|-------------|----------|
| GASKET,CLUTCH COVER (Ref # 11009) | 11009-1872 | 1 |
| GASKET,GENERATOR (Ref # 11009A) | 11009-1873 | 1 |
| CAP (Ref # 11012) | 11012-1362 | 1 |
| COVER (Ref # 14024) | 14024-1315 | 1 |
| COVER (Ref # 14024A) | 14024-1316 | 1 |
| COVER-CHAIN (Ref # 14026) | 14026-1127 | 1 |
| COVER-GENERATOR (Ref # 14031) | 14031-1225 | 1 |
| COVER-CLUTCH (Ref # 14032) | 14032-1225 | 1 |
| CAP-OIL FILLER (Ref # 16115) | 16115-1009 | 1 |
| GAUGE,OIL LEVEL (Ref # 52005) | 52005-1009 | 1 |
| BOLT,6X10 (Ref # 92002) | 92002-1449 | 1 |
| BUSHING (Ref # 92028) | 92028-1347 | 1 |
| PIN,DOWEL,6.2X8X14 (Ref # 92043) | 92043-1263 | 1 |
| BEARING,NEEDLE,HK1210 (Ref # 92046) | 92046-1010 | 1 |
| SEAL-OIL (Ref # 92049) | 92049-1271 | 1 |
| "O" RING,31MM (Ref # 92055) | 92055-049 | 1 |
| RING-O (Ref # 92055A) | 92055-1146 | 1 |
| PLUG,COVER,LH (Ref # 92066) | 92066-1163 | 1 |
| DAMPER,SOUND ARRESTOR (Ref # 92075) | 92075-1849 | 1 |
| DAMPER (Ref # 92075A) | 92075-1850 | 1 |
| BOLT-FLANGED-SMALL (Ref # 132) | 132J0620 | 1 |
| BOLT-FLANGED-SMALL (Ref # 132A) | 132J0625 | 1 |
| BOLT-FLANGED-SMALL (Ref # 132B) | 132J0630 | 1 |
| BOLT-FLANGED-SMALL (Ref # 132C) | 132J0650 | 1 |
| BOLT-FLANGED-SMALL (Ref # 132D) | 132W0675 | 1 |
| "O" RING,40MM (Ref # 671) | 671B2540 | 1 |