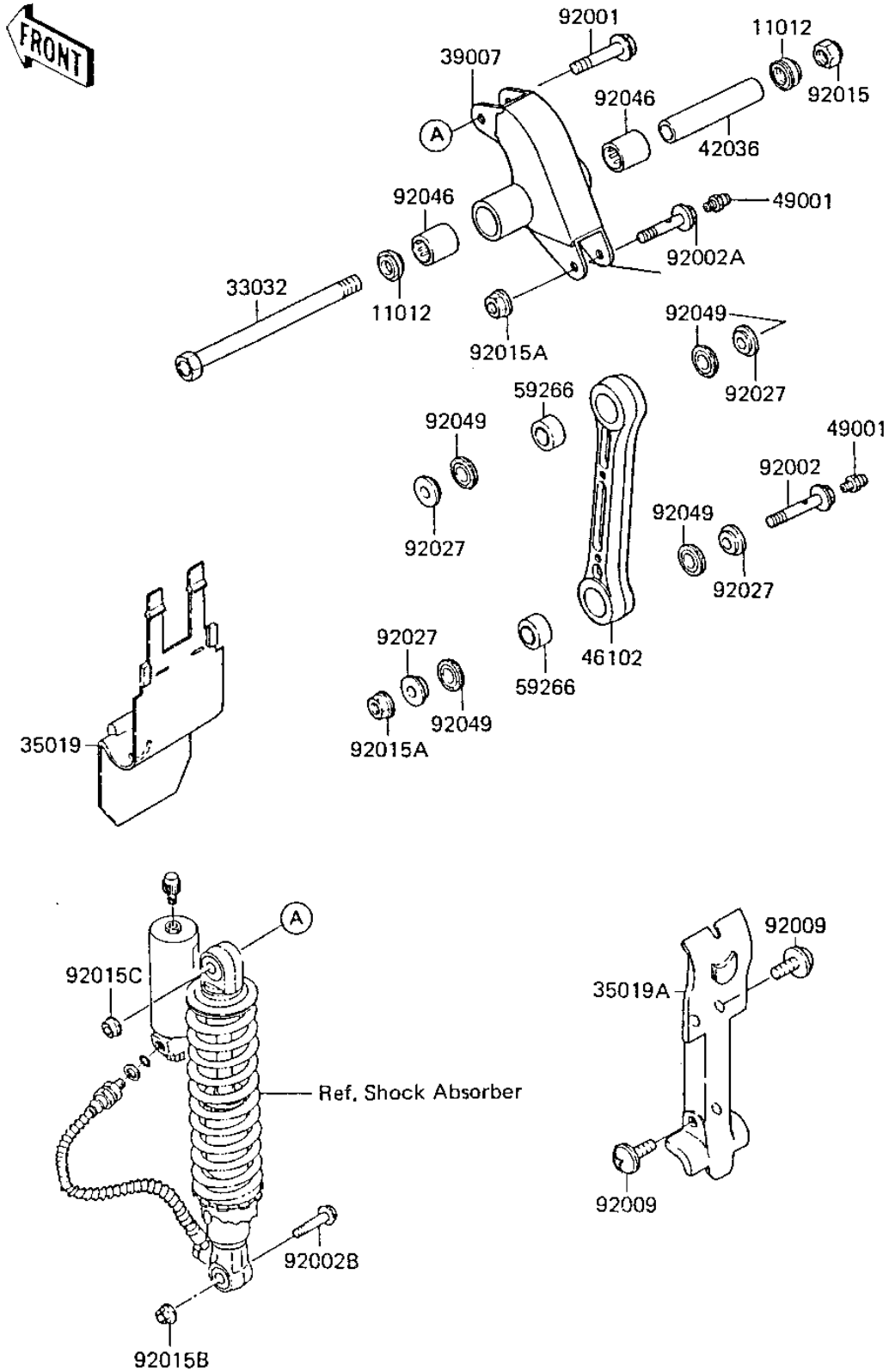


1984 KX™80 PARTS DIAGRAM

REAR SUSPENSION ('85 KX80-E3)

F2150-0053



1984 KX™80 PARTS LIST

REAR SUSPENSION ('85 KX80-E3)

ITEM NAME	PART NUMBER	QUANTITY
CAP,SWING ARM (Ref # 11012)	11012-1263	1
SHAFT-SUSPENSION ARM, (Ref # 33032)	33032-1032	1
FLAP,ARM-SUSP (Ref # 35019)	35019-1054	1
FLAP,ROD (Ref # 35019A)	35019-1139	1
ARM-SUSP,UNI-TRAK (Ref # 39007)	39007-1063	1
SLEEVE,SUSPENSION ARM (Ref # 42036)	42036-1068	1
ROD,SUSPENSION (Ref # 46102)	46102-1124	1
NIPPLE-GREASE,ROD BOL (Ref # 49001)	49001-1051	1
JOINT-BALL,SUSPENSION (Ref # 59266)	59266-1054	1
BOLT,FLANGED,10X43.5 (Ref # 92001)	92001-1711	1
BOLT,ROD,LWR,12MM (Ref # 92002)	92002-1366	1
BOLT,ROD,UPP,12MM (Ref # 92002A)	92002-1367	1
BOLT,FLANGED,10X41 (Ref # 92002B)	92002-1385	1
SCREW,6X10 (Ref # 92009)	92009-1286	1
NUT (Ref # 92015)	92015-1774	1
NUT-12MM (Ref # 92015A)	92015-1156	1
NUT,10MM (Ref # 92015B)	92015-1415	1
NUT,LOCK,FLANGED,10MM (Ref # 92015C)	92015-1338	1
COLLAR,ROD (Ref # 92027)	92027-1523	1
BEARING-NEEDLE,ARM-SU (Ref # 92046)	92046-1050	1
SEAL-OIL,ROD (Ref # 92049)	92049-1099	1