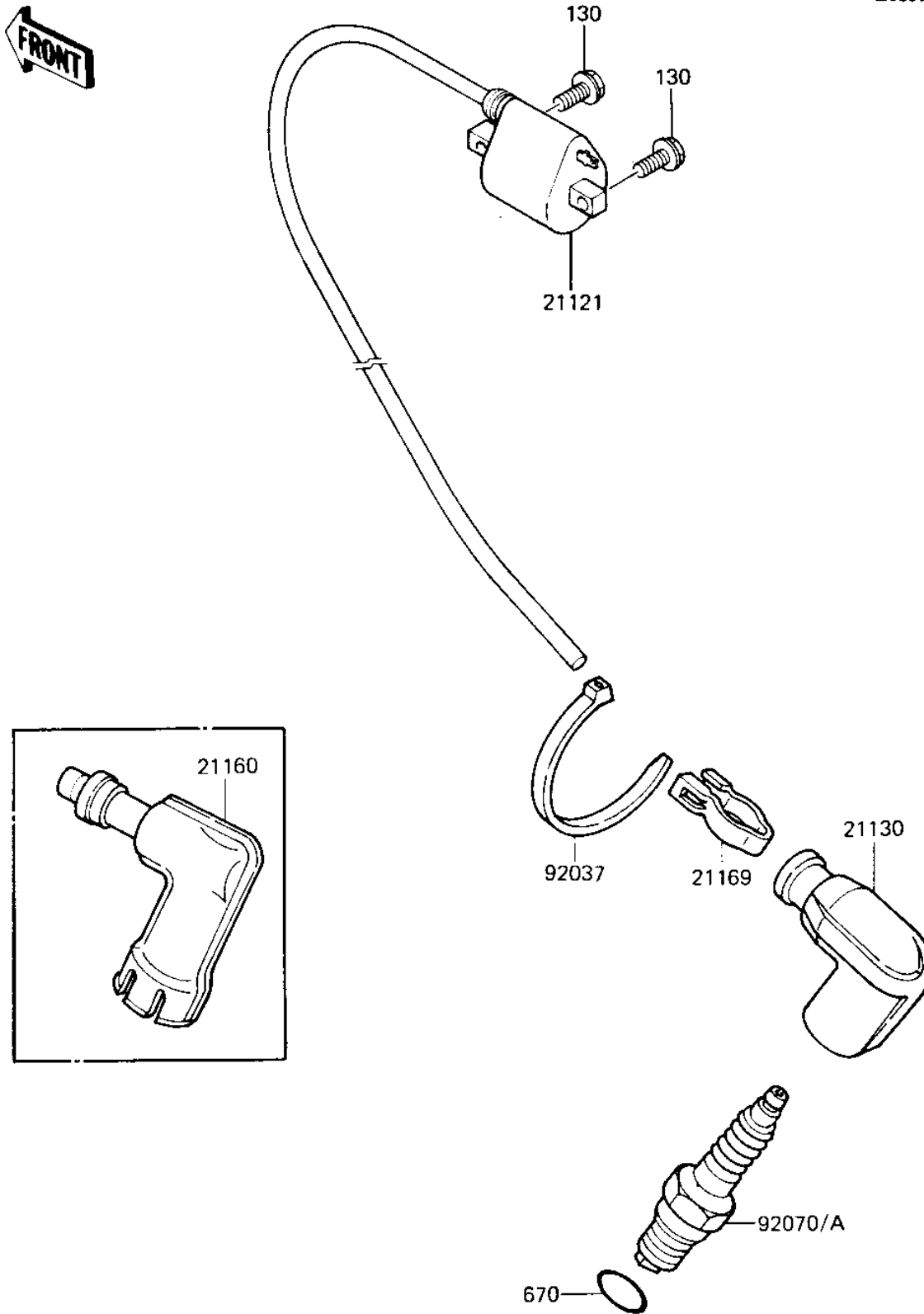


## 1984 KX™80 PARTS DIAGRAM

IGNITION COIL ('84 KX80-E2)

E1830-0183



## 1984 KX™80 PARTS LIST

IGNITION COIL ('84 KX80-E2)

ITEM NAME	PART NUMBER	QUANTITY
COIL-IGNITION (Ref # 21121)	21121-1057	1
CAP,SPARK PLUG (Ref # 21130)	21130-1006	1
CAP,SPARK PLUG (Ref # 21160)	21160-005	1
TERMINAL,PLUG CAP (Ref # 21169)	21169-001	1
CLAMP,SPARK PLUG CAP (Ref # 92037)	92037-1173	1
SPARK PLUG B9EG (Ref # 92070)	B9EG	1
*** N.L.A. *** (Canada) (Ref # 92070A)	92070-1061	1
BOLT-FLANGED,6X16 (Ref # 130)	130G0616	1
"O" RING,16MM (Ref # 670)	670B2016	1