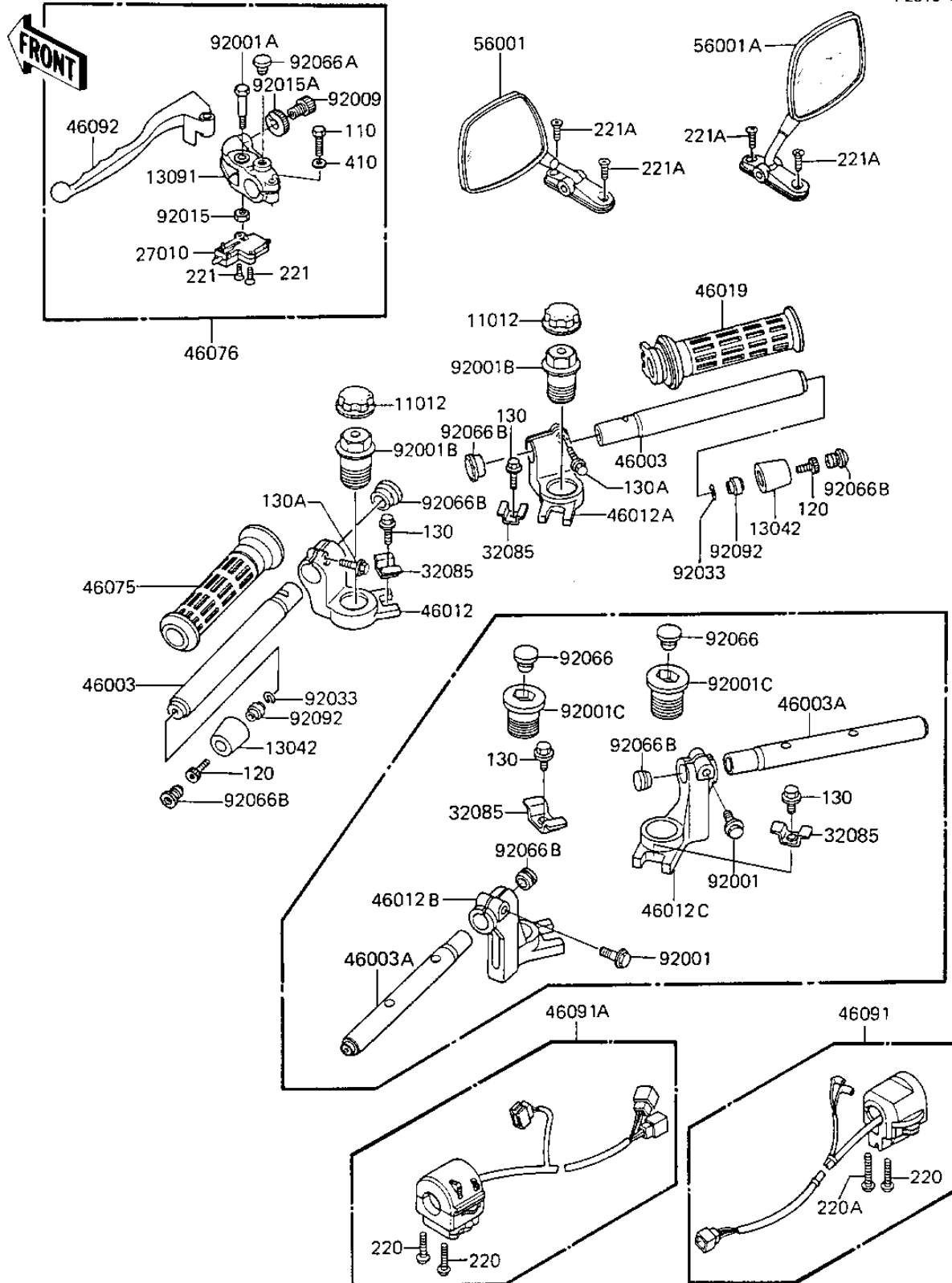


1983 GPz 1100 PARTS DIAGRAM

HANDLEBAR

F231U-0341



1983 GPz 1100 PARTS LIST

HANDLEBAR

ITEM NAME	PART NUMBER	QUANTITY
CAP,BOLT,PP,BLACK (Ref # 11012)	11012-1250	1
WEIGHT,HANDLE (Ref # 13042)	13042-1006	1
HOLDER,CLUTCH LEVER (Ref # 13091)	13091-1185	1
SWITCH,CLUTCH (Ref # 27010)	27010-1094	1
STOPPER (Ref # 32085)	32085-1092	1
HANDLE (Ref # 46003)	46003-1130	1
HOLDER-HANDLE,LH (Ref # 46012)	46012-1037	1
HOLDER-HANDLE,RH (Ref # 46012A)	46012-1038	1
GRIP-ASSY,THROTTLE (Ref # 46019)	46019-1021	1
GRIP,LH (Ref # 46075)	46075-1028	1
LEVER-ASSY-GRIP,LH (Ref # 46076)	46076-1041	1
HOUSING-ASSY-CNTRL,RH (Ref # 46091)	46091-1214	1
HOUSING-ASSY-CONTROL, (Ref # 46091A)	46091-1428	1
LEVER-GRIP,CLUTCH (Ref # 46092)	46092-1050	1
MIRROR-ASSY,LH (Ref # 56001)	56001-1142	1
MIRROR-ASSY,RH (Ref # 56001A)	56001-1145	1
BOLT,CLUTCH LEVER,BLA (Ref # 92001A)	92001-1548	1
BOLT,FLANGED,32X35,BL (Ref # 92001B)	92001-1845	1
SCREW,CABLE ADJUST,8 (Ref # 92009)	92009-1134	1
NUT,LOCK,6MM,BLACK (Ref # 92015)	92015-1191	1
NUT,CABLE ADJUST LOCK (Ref # 92015A)	92015-1197	1
RING-SNAP,OD=22.2 (Ref # 92033)	92033-1102	1
PLUG,9.5X8 (Ref # 92066A)	92066-1077	1
PLUG,HANDLE (Ref # 92066B)	92066-1124	1
BUSHING-RUBBER,HANDLE (Ref # 92092)	92092-1018	1
BOLT,6X22,BLACK (Ref # 110)	110C0622	1
BOLT,SOCKET,8X25 (Ref # 120)	120P0825	1
BOLT-FLANGED,6X16 (Ref # 130)	130J0616	1
BOLT-FLANGED,8X25,BLA (Ref # 130A)	130S0825	1

1983 GPz 1100 PARTS LIST

HANDLEBAR

ITEM NAME	PART NUMBER	QUANTITY
SCREW-PAN-CROS (Ref # 220)	220B0535	1
SCREW-PAN-CROS (Ref # 220A)	220B0540	1
SCREW-CSK-CROS (Ref # 221)	221C0316	1
SCREW-CSK-CROS,6X25,B (Ref # 221A)	221C0625	1
WASHER PLAIN (Ref # 410)	410F0600	1