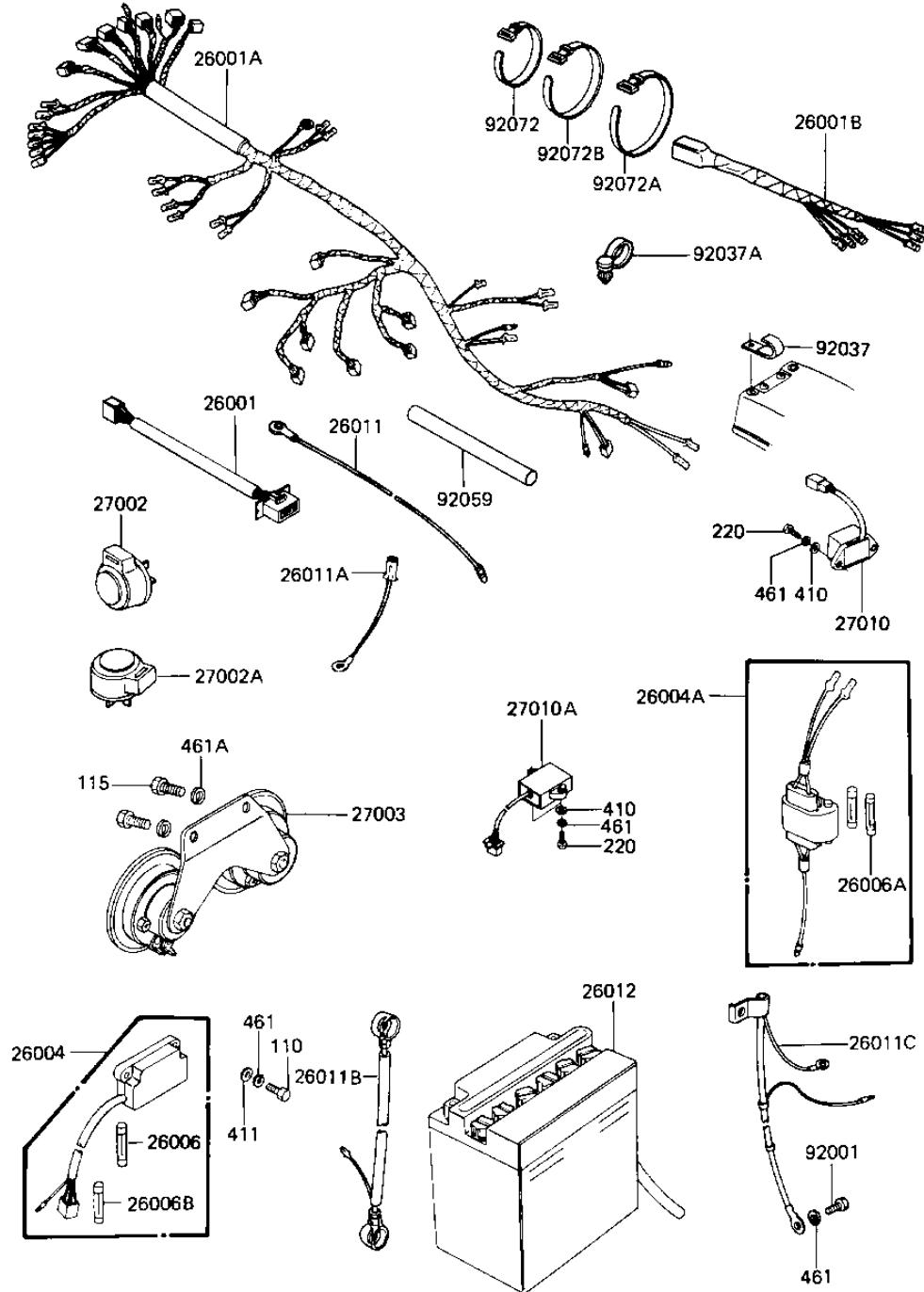


1983 1100 LTD Shaft PARTS DIAGRAM

CHASSIS ELECTRICAL EQUIPMENT

F2760-0219



1983 1100 LTD Shaft PARTS LIST

CHASSIS ELECTRICAL EQUIPMENT

ITEM NAME	PART NUMBER	QUANTITY
HARNESS,RESERVE LIGHT (Ref # 26001)	26001-1248	1
HARNESS,MAIN (Ref # 26001A)	26001-1459	1
WIRING HARNESS,REAR (Ref # 26001B)	26002-063	1
FUSE-ASSY (Ref # 26004)	26004-1011	1
FUSE-ASSY,ACCESSORY (Ref # 26004A)	26004-1014	1
FUSE 10A (Ref # 26006)	26006-003	1
FUSE,10A,L=30M/M (Ref # 26006A)	26006-1002	1
FUSE,30A,L=25M/M (Ref # 26006B)	26006-1005	1
WIRE,LEAD (Ref # 26011)	26011-095	1
WIRE-LEAD,ACCESSORY G (Ref # 26011A)	26011-1100	1
WIRE-LEAD,BATTERY,(+) (Ref # 26011B)	26011-1120	1
WIRE-LEAD,BATTERY,(-) (Ref # 26011C)	26011-1124	1
YUA BAT YB18L-A (Ref # 26012)	26012-1039	1
RELAY-TURN SIGNAL (Ref # 27002)	27002-011	1
RELAY,TURN SIGNAL (Ref # 27002A)	27002-016	1
HORN,F.BLACK (Ref # 27003)	27003-1064	1
SWITCH,RESERVE LIGHTI (Ref # 27010)	27010-1024	1
SWITCH,SELF CANCELING (Ref # 27010A)	27010-1079	1
BOLT,HEX HEAD,6MM (Ref # 92001)	92001-137	1
CLAMP,WIRING HARNESS (Ref # 92037)	92037-1069	1
CLAMP (Ref # 92037A)	92037-1163	1
TUBE,P.V.C,8X9X200 (Ref # 92059)	92059-1150	1
BAND,MIDDLE (Ref # 92072)	92072-031	1
BAND,LONG (Ref # 92072A)	92072-032	1
BAND,WIRING HARNESS (Ref # 92072B)	92072-056	1
BOLT 6X22 (Ref # 110)	112B0622	1
BOLT-SMALL,8X16,BLACK (Ref # 115)	115C0816	1
SCREW PAN HEAD 6X20 (Ref # 220)	220B0620	1
WASHER PLAIN 6MM (Ref # 410)	410B0600	1

1983 1100 LTD Shaft PARTS LIST

CHASSIS ELECTRICAL EQUIPMENT

ITEM NAME	PART NUMBER	QUANTITY
WASHER PLAIN 6MM (Ref # 411)	411B0600	1
WASHER SPRING 6MM (Ref # 461)	461F0600	1
WASHER-SPRING,8MM,BLA (Ref # 461A)	461K0800	1