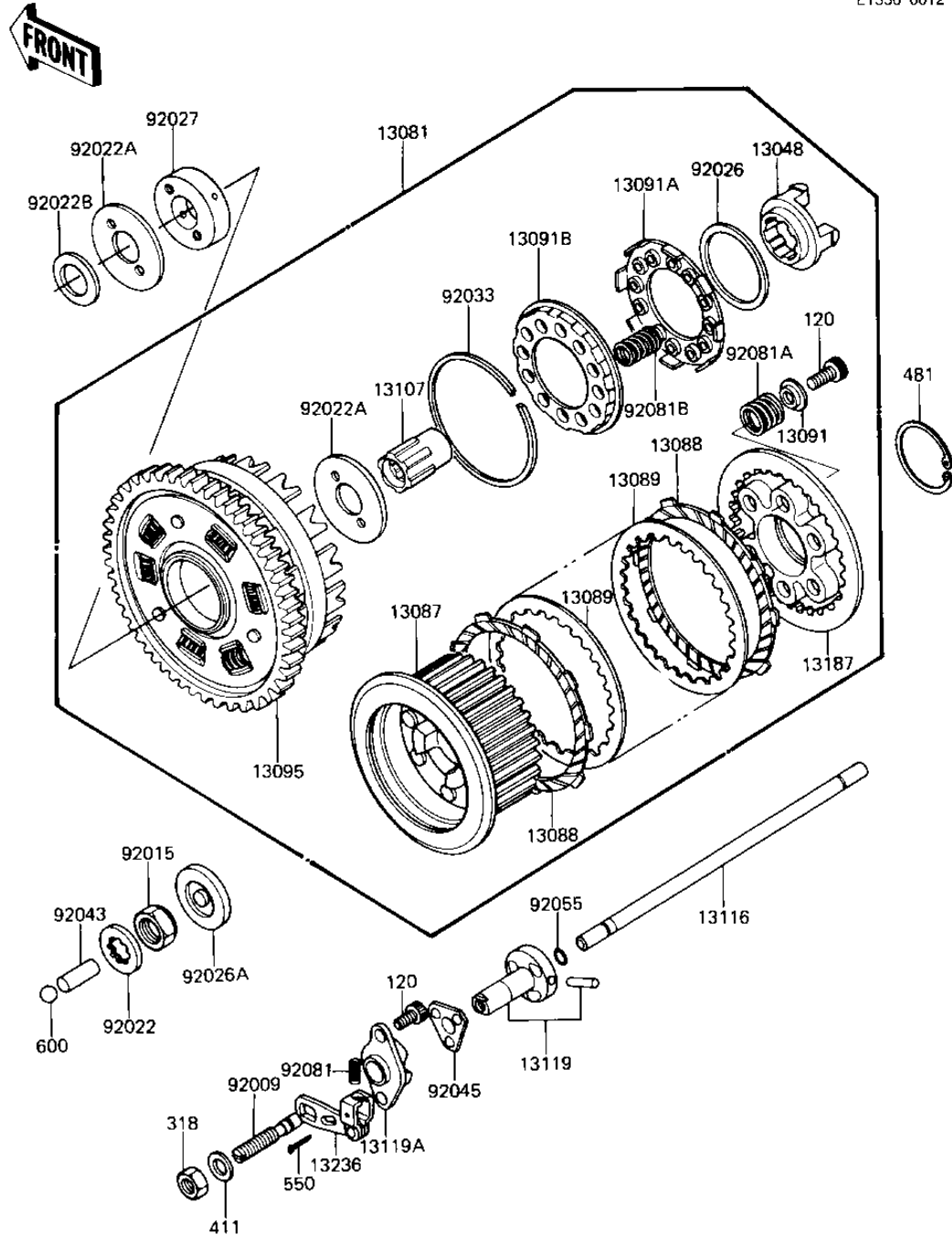


1983 1100 LTD Shaft PARTS DIAGRAM

CLUTCH

E1350-0012



1983 1100 LTD Shaft PARTS LIST

CLUTCH

ITEM NAME	PART NUMBER	QUANTITY
DAMPER (Ref # 13048)	13048-1007	1
CLUTCH-ASSY (Ref # 13081)	13081-1063	1
HUB,CLUTCH (Ref # 13087)	13087-1009	1
PLATE-FRICTION (Ref # 13088)	13088-1013	1
PLATE,CLUTCH,STEEL (Ref # 13089)	13089-1004	1
HOLDER,CLUTCH,SPRING (Ref # 13091)	13091-1041	1
HOLDER,CLUTCH SPRING (Ref # 13091A)	13091-1042	1
HOLDER,CLUTCH SPRING (Ref # 13091B)	13091-1043	1
HOUSING-COMP-CLUTCH (Ref # 13095)	13095-1037	1
SHAFT,CLUTCH (Ref # 13107)	13107-1024	1
ROD,CLUTCH PUSH (Ref # 13116)	13116-1007	1
CAM,CLUTCH RELEASE A (Ref # 13119)	13119-1007	1
CAM,CLUTCH RELEASE B (Ref # 13119A)	13119-1008	1
PLATE,CLUTCH OPERATNG (Ref # 13187)	13187-1004	1
LEVER ASSY,CLUTCH REL (Ref # 13236)	13236-1012	1
SCREW,CLUTCH RELEASE (Ref # 92009)	92009-1052	1
NUT,20MM (Ref # 92015)	92015-1555	1
WASHER,LOCK (Ref # 92022)	92022-1114	1
WASHER,CLUTCH THRUST (Ref # 92022A)	92022-1221	1
WASHER (Ref # 92022B)	92022-1223	1
SPACER,3.5X59X70 (Ref # 92026)	92026-1043	1
SPACER,CLUTCH (Ref # 92026A)	92026-1065	1
COLLAR (Ref # 92027)	92027-1284	1
RING,SNAP (Ref # 92033)	92033-1029	1
PIN,PUSH ROD (Ref # 92043)	92043-1051	1
BALL,ASSY,CLUTCH RELS (Ref # 92045)	92045-1023	1
"O" RING,5MM (Ref # 92055)	670B1505	1
SPRING-CLUTCH RELEASE (Ref # 92081)	92081-069	1
SPRING,CLUTCH (Ref # 92081A)	92081-1114	1

1983 1100 LTD Shaft PARTS LIST

CLUTCH

ITEM NAME	PART NUMBER	QUANTITY
SPRING,CLUTCH DAMPER (Ref # 92081B)	92081-1115	1
BOLT-SOCKET,6X16,BLAC (Ref # 120)	120S0616	1
NUT 8MM (Ref # 318)	318B0800	1
WASHER PLAIN 8MM (Ref # 411)	411B0800	1
UNAVAILABLE IN PRICE BOOK (Ref # 481)	481Q5000	1
PIN COTTER 1.6X15 (Ref # 550)	550D1615	1
BALL STEEL 3/8' (Ref # 600)	600A1200	1