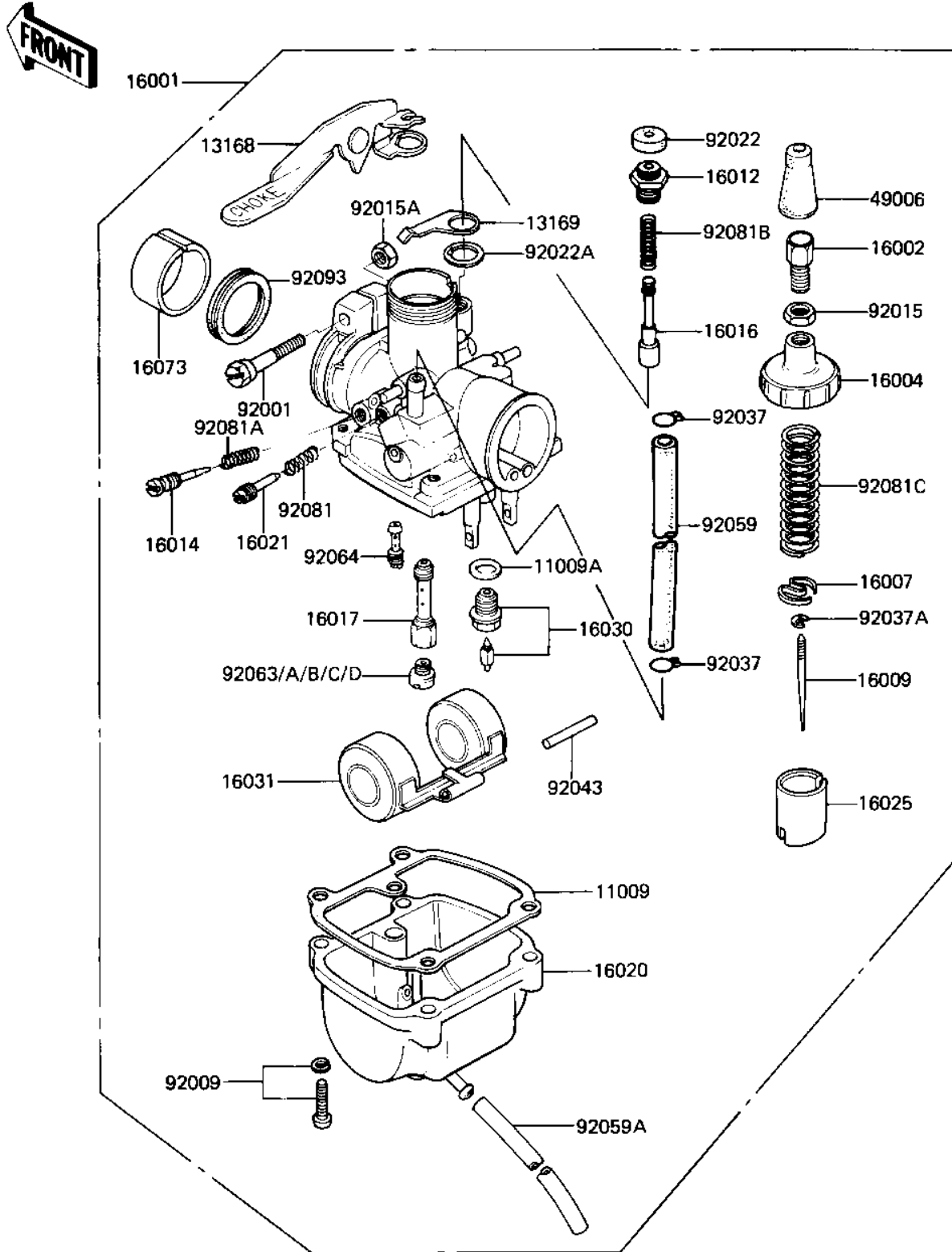


## 1982 Mini GP PARTS DIAGRAM

CARBURETOR

E1611-0024



## 1982 Mini GP PARTS LIST

### CARBURETOR

ITEM NAME	PART NUMBER	QUANTITY
GASKET (Ref # 11009)	16019-011	1
WASHER VALVE SEAT (Ref # 11009A)	16029-002	1
LEVER,STARTER (Ref # 13168)	13168-1347	1
PLATE,STARTER PLUNGER (Ref # 13169)	13169-1437	1
CARBURETOR (Ref # 16001)	16001-1340	1
ADJUSTER-CABLE (Ref # 16002)	16002-1008	1
CAP-CHAMBER (Ref # 16004)	16004-1011	1
SEAT-SPRING (Ref # 16007)	16007-1043	1
NEEDLE-JET,3I7-3 (Ref # 16009)	16009-1092	1
CAP,PLUNGER (Ref # 16012)	16012-016	1
SCREW-PILOT AIR (Ref # 16014)	16014-1030	1
PLUNGER,STARTER (Ref # 16016)	16016-1002	1
JET-NEEDLE,D-8 (Ref # 16017)	16017-1089	1
CHAMBER-FLOAT (Ref # 16020)	16020-1001	1
SCREW-THROTTLE STOP (Ref # 16021)	16021-1036	1
VALVE-THROTTLE,CA2.0 (Ref # 16025)	16025-1059	1
VALVE-FLOAT,1.8 (Ref # 16030)	16030-1017	1
FLOAT (Ref # 16031)	16031-1014	1
INSULATOR (Ref # 16073)	16073-1011	1
CAP,CARBURETOR (Ref # 49006)	16036-007	1
BOLT,CARBURETOR CLAMP (Ref # 92001)	92001-1476	1
SCREW-FLOAT CHAMBER (Ref # 92009)	16033-012	1
NUT-CABLE ADJUST LOCK (Ref # 92015)	16003-006	1
NUT (Ref # 92015A)	92015-1154	1
CAP,STARTER PLUNGER (Ref # 92022)	16039-015	1
WASHER (Ref # 92022A)	92022-1271	1
CLAMP-PIPE (Ref # 92037)	92037-072	1
CLAMP (Ref # 92037A)	92037-1272	1
FLOAT PIN (Ref # 92043)	16032-003	1

## 1982 Mini GP PARTS LIST

### CARBURETOR

ITEM NAME	PART NUMBER	QUANTITY
HOSE,FUEL TAP DIAPHRA (Ref # 92059)	92059-1023	1
TUBE,3X5X250,BLACK (Ref # 92059A)	92059-1308	1
JET-MAIN NO 112.5R (Ref # 92063)	92063-075	1
JET-MAIN NO 115R (Ref # 92063A)	92063-076	1
JET-MAIN NO 117.5R (Ref # 92063B)	92063-077	1
MAIN JET NO 120R (Ref # 92063C)	92063-078	1
MAIN JET,#A100 (Ref # 92063D)	92063-1033	1
PILOT JET #17.5 ISO (Ref # 92064)	92064-020	1
SPRING-THR STOP SCREW (Ref # 92081)	16022-007	1
SPRING,AIR SCREW (Ref # 92081A)	92081-1153	1
SPRING (Ref # 92081B)	92081-1398	1
SPRING,THROTTLE VALVE (Ref # 92081C)	92081-1399	1
SEAL (Ref # 92093)	92093-1062	1