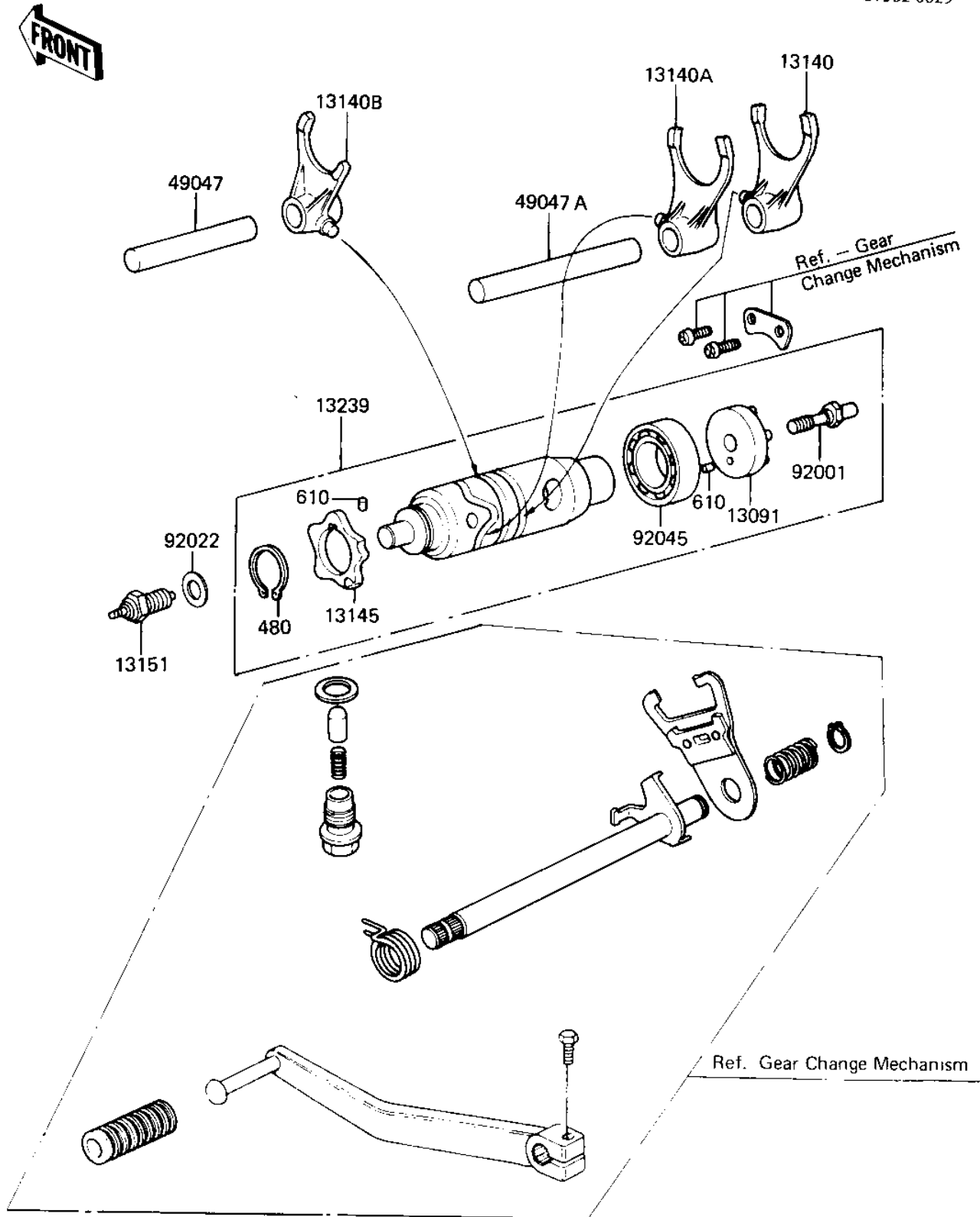


1982 KL250 PARTS DIAGRAM

GEAR CHANGE DRUM & FORKS

E1362-0029



1982 KL250 PARTS LIST

GEAR CHANGE DRUM & FORKS

ITEM NAME	PART NUMBER	QUANTITY
PLATE,GEAR CHANGE (Ref # 13091)	13142-019	1
SHIFT FORK,LOW (Ref # 13140)	13140-073	1
SHIFT FORK,2ND&3RD (Ref # 13140A)	13140-074	1
SHIFT FORK,4TH&TOP (Ref # 13140B)	13140-075	1
DISK,SHIFT DRUM (Ref # 13145)	13145-1002	1
SWITCH,NEUTRAL (Ref # 13151)	13151-1007	1
DRUM ASSY,GEAR SHIFT (Ref # 13239)	13239-1036	1
ROD,SHIFT 71.7M/M (Ref # 49047)	49047-1002	1
ROD,SHIFT 93.7M/M (Ref # 49047A)	49047-1003	1
BOLT (Ref # 92001)	92001-166	1
GASKET CHECK VALVE (Ref # 92022)	92065-058	1
BEARING,BALL,#6905 (Ref # 92045)	92045-036	1
CIRCLIP 24MM (Ref # 480)	480J2400	1
PIN-DOWEL,4X6 (Ref # 610)	610A0406	1