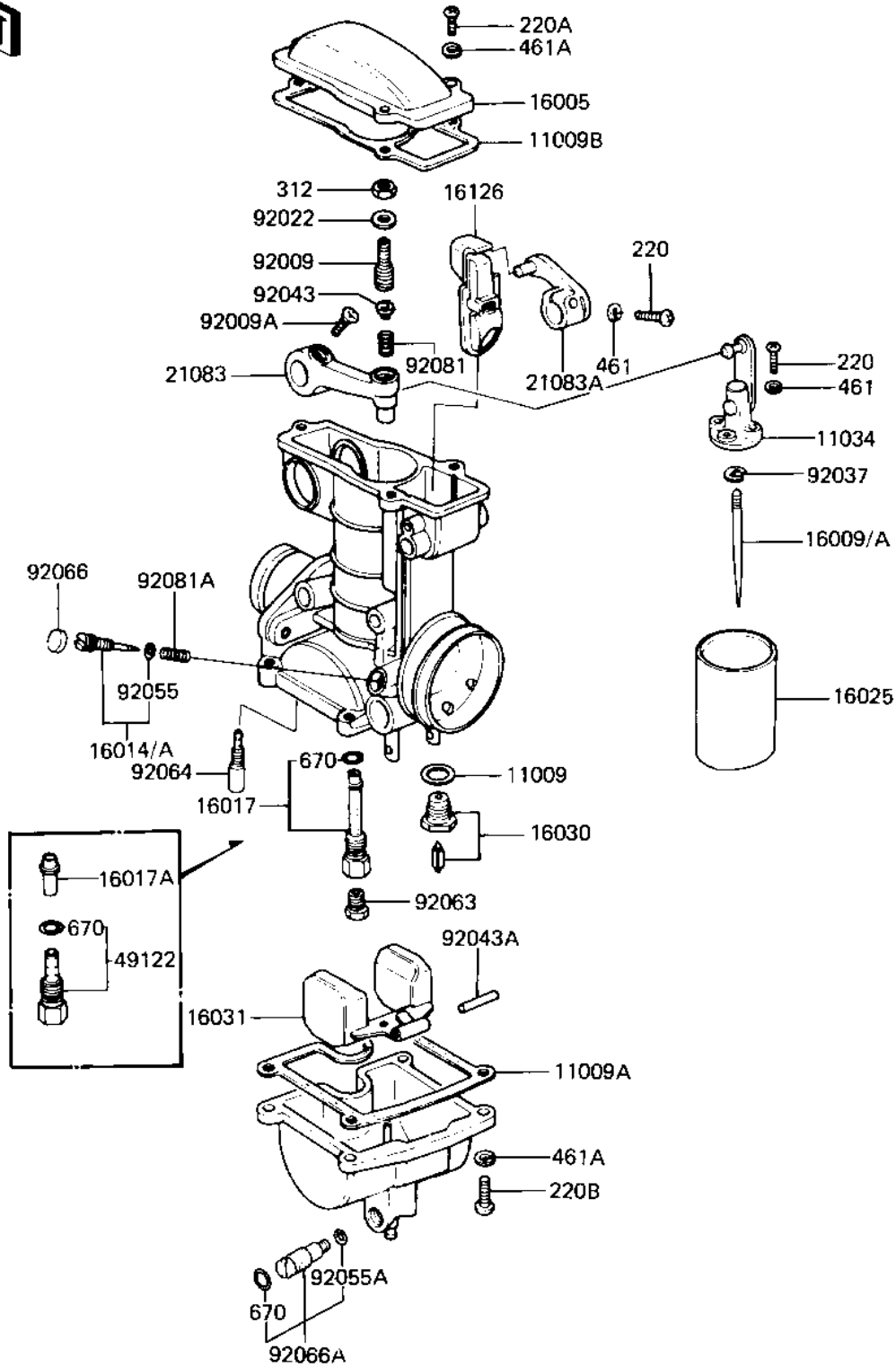


1982 550 LTD PARTS DIAGRAM

CARBURETOR PARTS ('82-'83 C3/C4)

E1612-0022



1982 550 LTD PARTS LIST

CARBURETOR PARTS ('82-'83 C3/C4)

ITEM NAME	PART NUMBER	QUANTITY
GASKET,FLOAT VALVE (Ref # 11009)	11009-1160	1
GASKET,FLOAT CHAMBER (Ref # 11009A)	11009-1161	1
GASKET,MIXING CHAMBER (Ref # 11009B)	11009-1162	1
BRACKET ASSY,THROTTLE (Ref # 11034)	11034-1587	1
UNAVAILABLE IN PRICE BOOK (Ref # 16005)	16005-1006	1
JET NEEDLE,#4D92 (Ref # 16009)	16009-1060	1
JET NEEDLE,#4D93 (Ref # 16009A)	16009-1061	1
SCREW,AIR ADJUSTING (Ref # 16014)	16014-1019	1
SCREW,AIR ADJUSTING (Ref # 16014A)	16014-1024	1
NEEDLE JET,#V95 (Ref # 16017)	16017-1044	1
NEEDLE JET,#V95 (Ref # 16017A)	16017-1057	1
VALVE , THROTTLE, CA2,5 (Ref # 16025)	16025-1038	1
FLOAT VALVE ASSY. (Ref # 16030)	16030-1009	1
FLOAT (Ref # 16031)	16031-1009	1
VALVE ASSY,CHOKE (Ref # 16126)	16126-1024	1
ARM,THROTTLE (Ref # 21083)	21083-1006	1
ARM,CHOKE (Ref # 21083A)	21083-1007	1
PIPE,BLEED (Ref # 49122)	49122-1010	1
SCREW,ADJUST,THROTTLE (Ref # 92009)	92009-1079	1
SCREW.COUNTERSINK HD,4X12 (Ref # 92009A)	92009-1080	1
WASHER,PLAIN (Ref # 92022)	92022-1167	1
CIRCLIP,JET NEEDLE (Ref # 92037)	92037-1157	1
PIN,SPRING,THROTTLE (Ref # 92043)	92043-1065	1
PIN (Ref # 92043A)	92043-1066	1
"O" RING,AIR SCREW (Ref # 92055)	92055-1070	1
"O" RING,OVERFLOW (Ref # 92055A)	92055-1071	1
MAIN JET,#92 (Ref # 92063)	92063-1055	1
PILOT JET #32 (Ref # 92064)	92064-1028	1
PLUG,PILOT SCREW (Ref # 92066)	92066-1051	1

1982 550 LTD PARTS LIST

CARBURETOR PARTS ('82-'83 C3/C4)

ITEM NAME	PART NUMBER	QUANTITY
SCREW,DRAIN (Ref # 92066A)	92066-1065	1
SPRING,THROTTLE ARM (Ref # 92081)	92081-1189	1
SPRING,AIR SCREW (Ref # 92081A)	92081-1190	1
SCREW PAN HEAD 3X12 (Ref # 220)	220B0312	1
SCREW-PAN-CROS (Ref # 220A)	220B0414	1
SCREW PAN HEAD 4X16 (Ref # 220B)	220B0416	1
NUT 5MM (Ref # 312)	312B0500	1
WASHER SPRING 3MM (Ref # 461)	461F0300	1
WASHER SPRING 4MM (Ref # 461A)	461F0400	1
"O" RING,5MM (Ref # 670)	670B1505	1