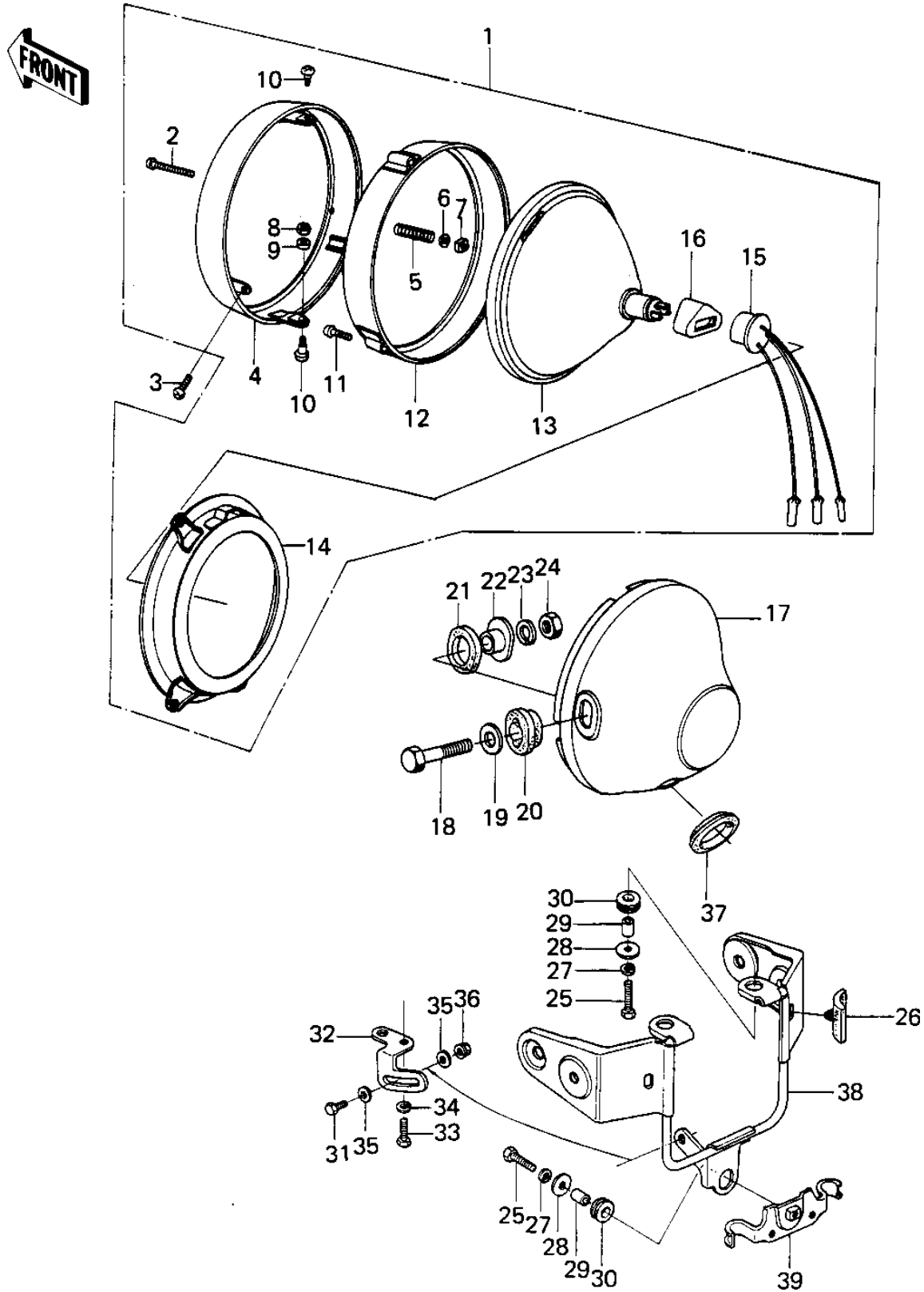


## 1980 750 Standard-4 PARTS DIAGRAM

HEADLIGHT ('80 KZY 50-E1)



## 1980 750 Standard-4 PARTS LIST

HEADLIGHT ('80 KZY 50-E1)

ITEM NAME	PART NUMBER	QUANTITY
LAMP UNIT,HEAD (Ref # 1)	23004-1009	1
SCREW FORCUS ADJUST (Ref # 2)	23019-021	1
SCREW,PAN HEAD,5X14 (Ref # 3)	23019-022	1
RIM,HEAD LAMP (Ref # 4)	23006-038	1
SPRING FOCUS ADJUST (Ref # 5)	23014-005	1
WASHER (Ref # 6)	23021-004	1
NUT,4MM (Ref # 7)	23020-018	1
NUT,HEAD LAMP RIM FIT (Ref # 8)	23020-023	1
WASHER-PLAIN,5MM (Ref # 9)	23021-012	1
SCREW-PAN HEAD,5X12 (Ref # 10)	23019-023	1
SCREW PAN HEAD 3X12 (Ref # 11)	220B0312	1
RING,HEAD LAMP MOUNT (Ref # 12)	23072-001	1
SEALED BEAM UNIT (Ref # 13)	23007-1006	1
RING,HEAD LAMP MOUNT (Ref # 14)	23074-001	1
SOCKET ASSY,HEAD LAMP (Ref # 15)	23008-037	1
DUST COVER,HEAD LAMP (Ref # 16)	49016-1009	1
BODY-COMP-HEAD LAMP (Ref # 17)	23005-1015-21	1
BOLT,10MM (Ref # 18)	92007-024	1
WASHER-PLAIN,10MM (Ref # 19)	411D1000	1
DAMPER RUBBER (Ref # 20)	23066-022	1
DAMPER RUBBER (Ref # 21)	23066-021	1
COLLAR,HEAD LIGHT (Ref # 22)	23052-011	1
WASHER SPRING 10MM (Ref # 23)	461F1000	1
NUT 10MM (Ref # 24)	315B1000	1
BOLT-UPSET (Ref # 25)	112G0625	1
DAMPER RUBBER (Ref # 26)	92075-1243	1
WASHER SPRING 6MM (Ref # 27)	461F0600	1
WASHER 6.5X20X1.6T (Ref # 28)	92022-125	1
COLLAR (Ref # 29)	92027-241	1

## 1980 750 Standard-4 PARTS LIST

HEADLIGHT ('80 KZY 50-E1)

ITEM NAME	PART NUMBER	QUANTITY
DAMPER RUBBER,RR FENR (Ref # 30)	92075-209	1
BOLT-UPSET,6X12 (Ref # 31)	112G0612	1
BRACKET (Ref # 32)	11034-1676	1
BOLT-SMALL-UPSET,8X16 (Ref # 33)	115G0816	1
WASHER SPRING 8MM (Ref # 34)	461F0800	1
WASHER PLAIN 6MM (Ref # 35)	411B0600	1
NUT,LOCK 6MM (Ref # 36)	92017-014	1
GROMMET (Ref # 37)	92071-1008	1
BRACKET,HEAD LAMP (Ref # 38)	11034-1674	1
BRACKET,HEAD LAMP UND (Ref # 39)	11034-1675	1