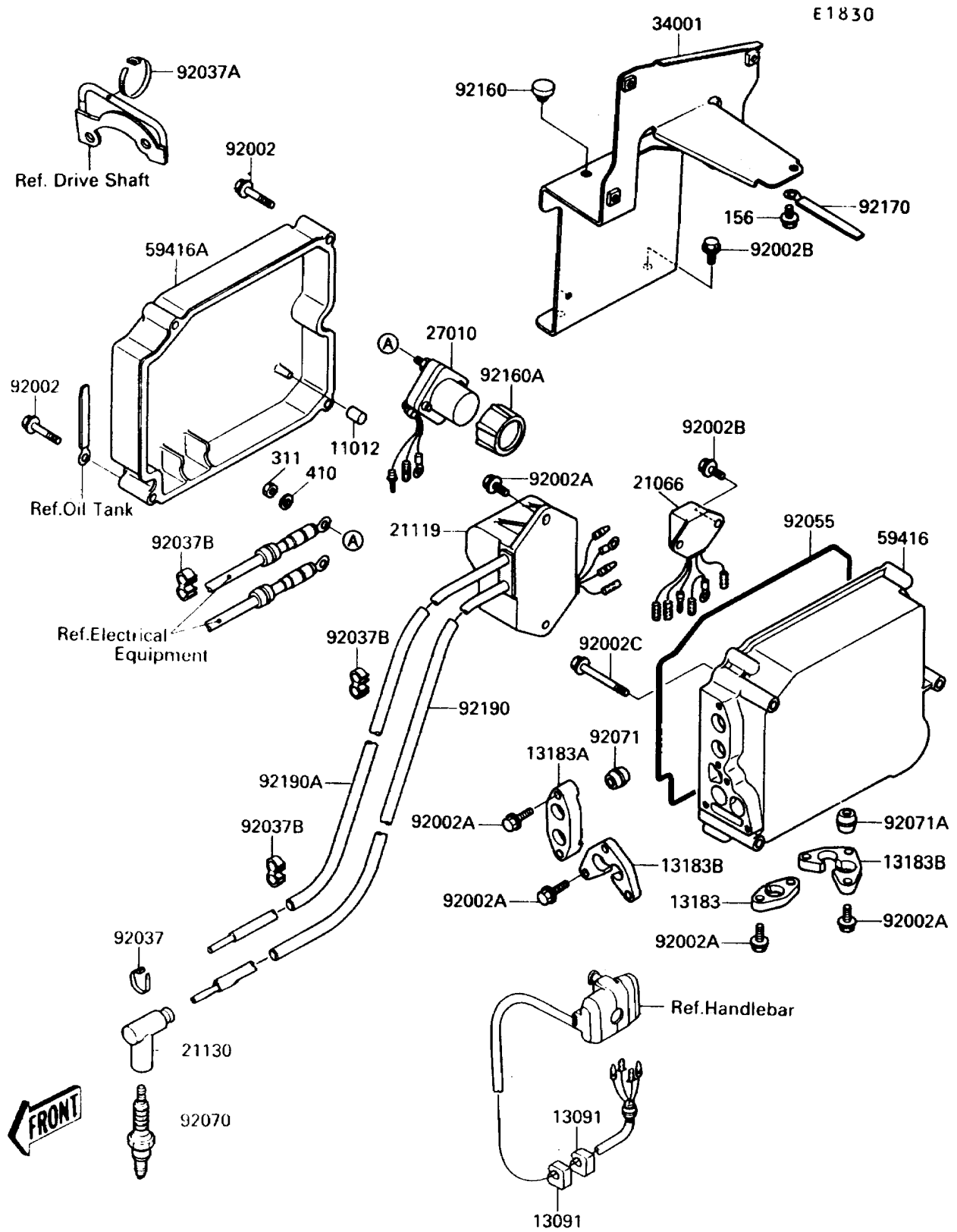


## 1989 JET SKI® TS PARTS DIAGRAM

Ignition System



## 1989 JET SKI® TS PARTS LIST

### Ignition System

ITEM NAME	PART NUMBER	QUANTITY
CAP (Ref # 11012)	11012-3734	1
HOLDER (Ref # 13091)	13091-3712	1
PLATE (Ref # 13183)	13183-3712	1
PLATE (Ref # 13183A)	13183-3730	1
PLATE (Ref # 13183B)	13183-3737	1
REGULATOR-VOLTAGE (Ref # 21066)	21066-3708	1
IGNITER (Ref # 21119)	21119-3718	1
CAP-SPARK PLUG (Ref # 21130)	21130-1062	1
SWITCH,STARTER RELAY (Ref # 27010)	27010-3714	1
STAND (Ref # 34001)	34001-3702	1
CASE-ELECTRIC (Ref # 59416)	59416-3718	1
CASE-ELECTRIC (Ref # 59416A)	59416-3719	1
BOLT,6X35 (Ref # 92002)	92002-3715	1
BOLT,6X20 (Ref # 92002A)	92002-3755	1
BOLT,6X12 (Ref # 92002B)	92002-3763	1
BOLT,6X55 (Ref # 92002C)	92002-3772	1
CLAMP (Ref # 92037)	92037-1173	1
CLAMP,L=200 (Ref # 92037A)	92037-1576	1
CLAMP,HOSE (Ref # 92037B)	92037-1603	1
RING-O,ELECTRIC CASE (Ref # 92055)	92055-3715	1
PLUG-SPARK,BR7ES(NGK) (Ref # 92070)	92070-3701	1
GROMMET (Ref # 92071)	92071-3756	1
GROMMET,ELECTRIC CASE (Ref # 92071A)	92071-3765	1
DAMPER (Ref # 92160)	92075-1983	1
DAMPER (Ref # 92160A)	92160-3729	1
CLAMP (Ref # 92170)	92170-3705	1
TUBE,HIGH TENSION,L=330 (Ref # 92190)	92190-3707	1
TUBE,HIGH TENSION,L=210 (Ref # 92190A)	92190-3708	1
BOLT-WP,6X12 (Ref # 156)	156R0612	1

## 1989 JET SKI® TS PARTS LIST

Ignition System

ITEM NAME	PART NUMBER	QUANTITY
NUT-HEX,6MM (Ref # 311)	311R0600	1
WASHER-PLAIN-SMALL,6MM (Ref # 410)	410S0600	1