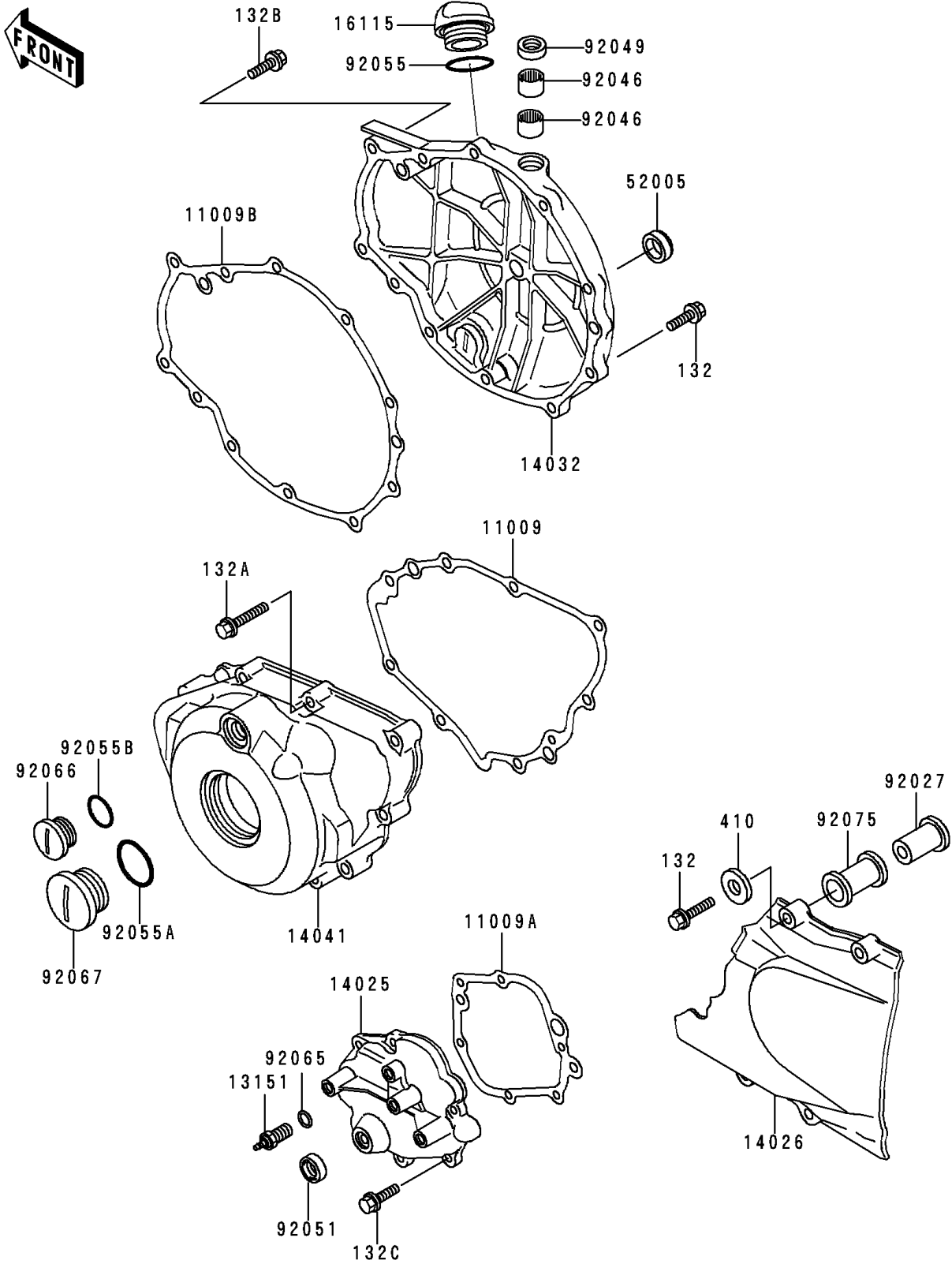


## 1990 Vulcan® 500 PARTS DIAGRAM

Engine Covers

E1431



## 1990 Vulcan® 500 PARTS LIST

Engine Covers

ITEM NAME	PART NUMBER	QUANTITY
BOLT-FLANGED-SMALL (Ref # 132)	132E0625	1
BOLT-FLANGED-SMALL (Ref # 132A)	132E0630	1
BOLT-FLANGED-SMALL (Ref # 132B)	132E0635	1
BOLT-FLANGED-SMALL (Ref # 132C)	132J0620	1
WASHER-PLAIN-SMALL,6MM (Ref # 410)	410B0600	1
GASKET,GENERATOR COVER (Ref # 11009)	11009-1834	1
GASKET,CHANGE MECHANISM COVER (Ref # 11009A)	11009-1835	1
GASKET,CLUTCH COVER (Ref # 11009B)	11009-1836	1
SWITCH-COMP,NEUTRAL (Ref # 13151)	13151-1007	1
COVER,CHANGE MECHANISM (Ref # 14025)	14025-1986	1
COVER-CHAIN (Ref # 14026)	14026-1155	1
COVER-CLUTCH (Ref # 14032)	14032-1284	1
COVER-COMP,GENERATOR (Ref # 14041)	14041-1096	1
CAP-OIL FILLER (Ref # 16115)	16115-1062	1
GAUGE,OIL LEVEL (Ref # 52005)	52005-1009	1
COLLAR (Ref # 92027)	92027-1858	1
BEARING-NEEDLE,HK1210 (Ref # 92046)	92046-1010	1
SEAL-OIL,TB12205.5 (Ref # 92049)	92049-1271	1
SEAL-OIL,TB13225.5 (Ref # 92051)	92051-005	1
RING-O,31.5X2.6 (Ref # 92055)	92055-049	1
RING-O (Ref # 92055A)	92055-091	1
RING-O (Ref # 92055B)	92055-1146	1
GASKET,10.5X16X1,DRAIN PLUG (Ref # 92065)	92065-058	1
PLUG,COVER,LH (Ref # 92066)	92066-1218	1
PLUG,RELEASE,30X8 (Ref # 92067)	92067-024	1
DAMPER (Ref # 92075)	92075-1681	1