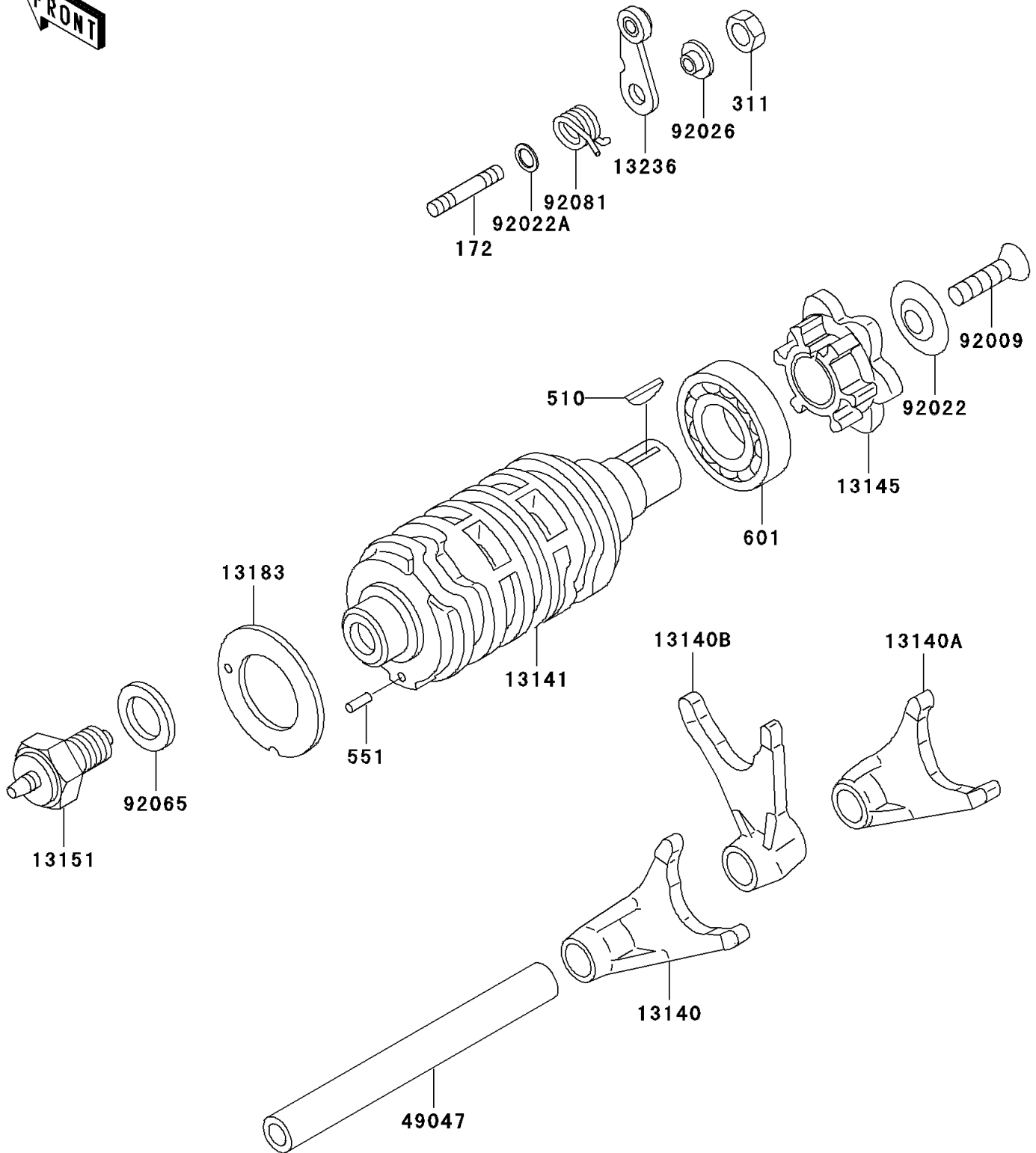


## 2001 Eliminator® 125 PARTS DIAGRAM

Gear Change Drum/Shift Fork(s)

E1362



## 2001 Eliminator® 125 PARTS LIST

Gear Change Drum/Shift Fork(s)

ITEM NAME	PART NUMBER	QUANTITY
BOLT-STUD,6X12 (Ref # 172)	172G0612	1
NUT-HEX,6MM (Ref # 311)	311G0600	1
KEY-WOODRUFF (Ref # 510)	510A3200	1
PIN-DOWEL,3X6 (Ref # 551)	551A0306	1
BEARING-BALL (Ref # 601)	601B6003	1
FORK-SHIFT,2ND-4TH (Ref # 13140)	13140-1247	1
FORK-SHIFT,LOW-3RD (Ref # 13140A)	13140-1264	1
FORK-SHIFT,5TH-TOP (Ref # 13140B)	13140-1265	1
DRUM-CHANGE (Ref # 13141)	13141-1210	1
CAM-CHANGE DRUM (Ref # 13145)	13145-1084	1
SWITCH-COMP,NEUTRAL (Ref # 13151)	13151-1080	1
PLATE,CHANGE (Ref # 13183)	13183-1066	1
LEVER-COMP,DRUM POSITION (Ref # 13236)	13236-1192	1
ROD-SHIFT (Ref # 49047)	49047-1068	1
SCREW,6X16 (Ref # 92009)	92009-1360	1
WASHER (Ref # 92022)	92022-1792	1
WASHER,6X12.8X1.2 (Ref # 92022A)	92022-1827	1
SPACER (Ref # 92026)	92026-1217	1
GASKET,10.5X16X1 (Ref # 92065)	92065-058	1
SPRING,POSITION LEVER (Ref # 92081)	92081-1993	1